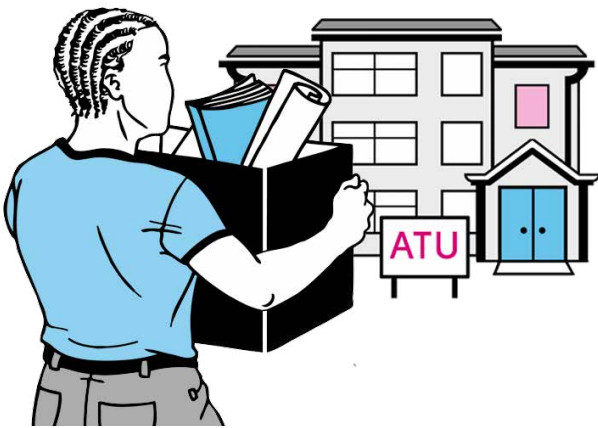
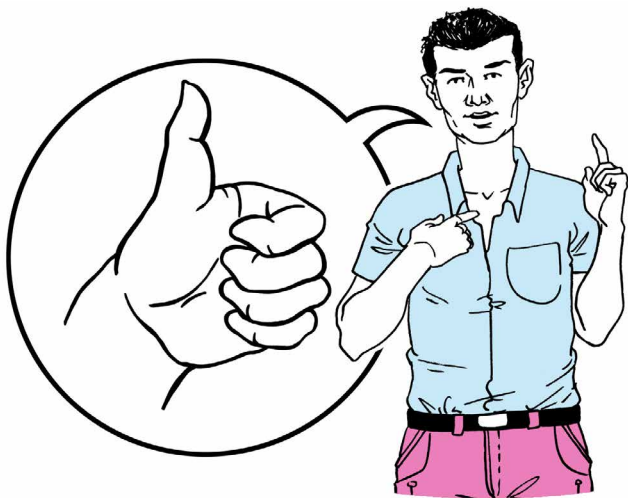


# Moving back to the community questionnaire



We are working on a project about coming out of Assessment and Treatment Units (inpatient hospitals) and moving back into the community.



We would like to hear about your experiences to see how this can be done in the best way.



If you are interested in telling us your experience about your time in hospital please fill out this feedback form.



Or you can speak to Sarah or Claire at  
CHANGE on:

**0113 2426619**



Or email us on:

**[claire@changepeople.org](mailto:claire@changepeople.org)**



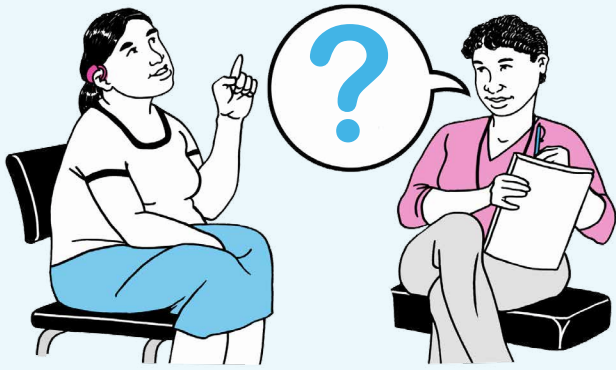
This information will help us find out  
what works well and what can be  
improved. It is very important to hear  
your view.



We will not use your name when  
we use the information you have  
provided.



You can fill this form in on your computer  
and email it back to us, or print it out,  
write on it, then post it to us. Both the  
addresses to send it to are at the end  
of the questionnaire (on page 6).



After we read your survey results, we might want to meet with you or ask some more questions. Is that OK?

Yes

No

If Yes please write your name and how we can contact you;



Name:

Phone number:

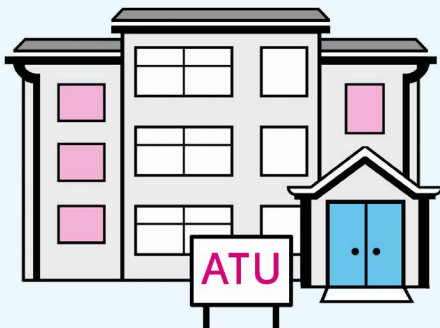
Email:



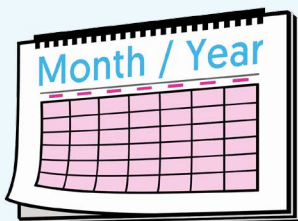
I am sharing this information:

About me

On behalf of a friend or family



Name of the hospital you were in:



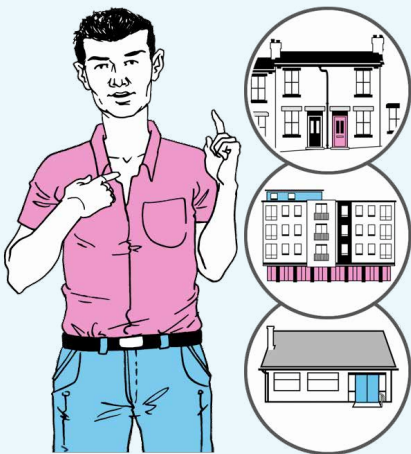
Tell us the month and year you left hospital:

When you left hospital did you feel prepared?



A large rectangular box with a pink border, containing five horizontal dotted lines for writing.

Did you have a choice about where you are now living?



A large rectangular box with a pink border, containing five horizontal dotted lines for writing.

Were your family and friends involved? If they were, how?



A large rectangular box with a pink border, containing five horizontal dotted lines for writing.

Do you get out and take part in activities in the community? If so, what do you do?



A large rectangular box with a pink border and horizontal dashed lines for writing.

Did you have a choice about these activities?



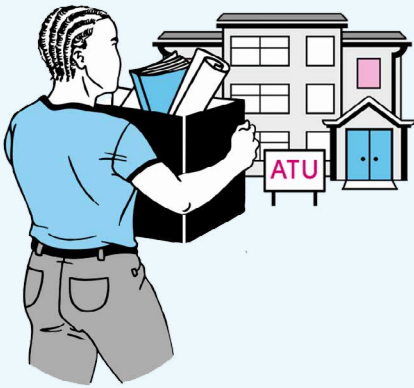
A large rectangular box with a pink border and horizontal dashed lines for writing.

How are you feeling about living in the community?



A large rectangular box with a pink border and horizontal dashed lines for writing.

Do you have any concerns about returning to an inpatient hospital?



A large rectangular area with a pink border, containing five horizontal dotted lines for writing.



Thank you for your feedback!



Please **email** it to:

[claire@changepeople.org](mailto:claire@changepeople.org)

Or **post** it to:

Claire Drake  
CHANGE, 4th Floor,  
Calls Landing,  
36-38 The Calls,  
Leeds, LS2 7EW

